

MONTHLY MEMBERSHIP PROGRESS REPORT

LOCATION ILLINOIS

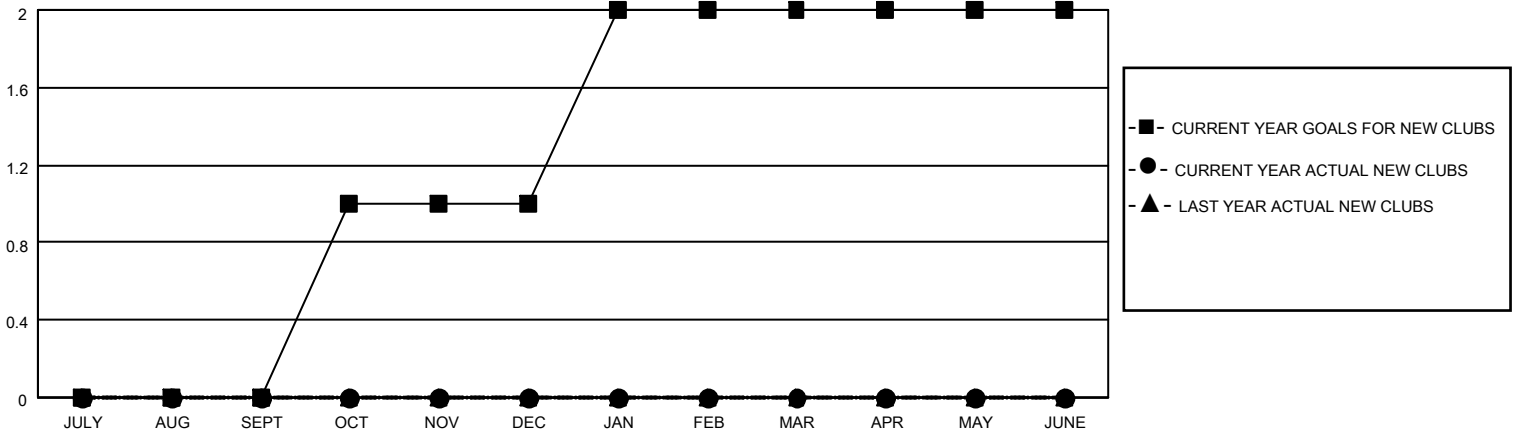
District 1 F

Results as of: 5/31/2023

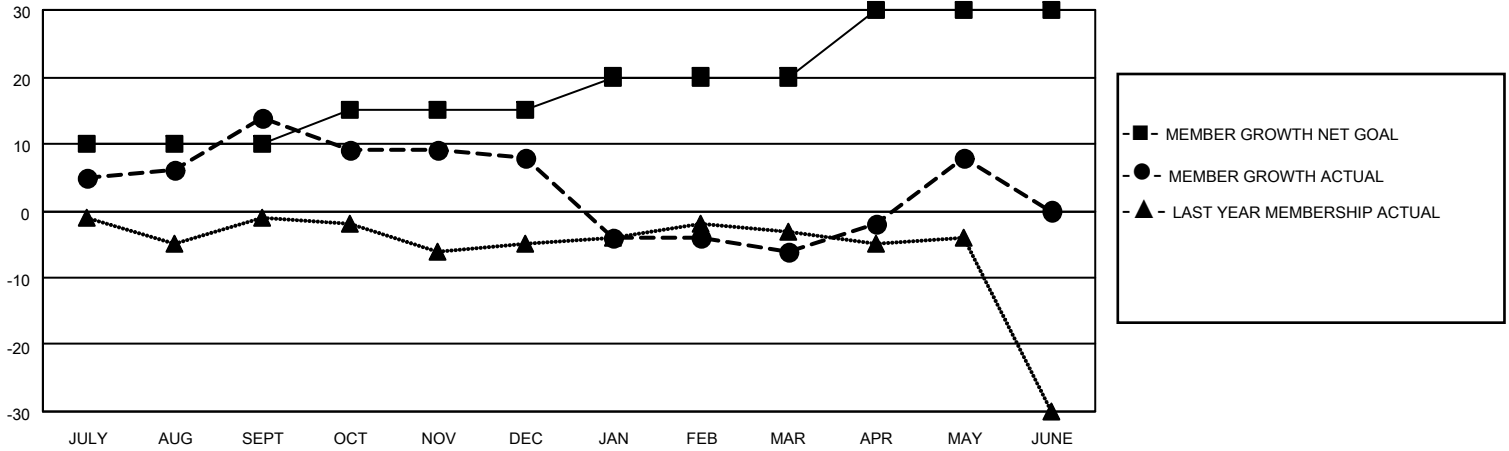
Clubs			
RESULTS FOR 2022-2023			
QUARTER	NEW CLUB GOAL	NEW CLUBS	DROPPED CLUBS
JULY/AUG/SEPT	0	0	0
OCT/NOV/DEC	1	0	1
JAN/FEB/MAR	1	0	0
APR/MAY/JUNE	0	0	0

Members			
RESULTS FOR 2022-2023			
QUARTER	MEMBER GROWTH NET GOAL	MEMBER GROWTH ACTUAL	DROPPED MEMBERS ACTUAL (including transfers)
JULY/AUG/SEPT	10	25	8
OCT/NOV/DEC	5	26	29
JAN/FEB/MAR	5	15	26
APR/MAY/JUNE	10	26	12

GOALS AND ACTUAL NEW CLUBS CUMULATIVE



GOALS AND ACTUAL MEMBERS CUMULATIVE



DROPPED CLUBS: 1

21 CLUBS OF 31 ADDED 1 OR MORE NEW MEMBERS

GENDER DISTRIBUTION

MALE	585 (69.40%)
FEMALE	256 (30.37%)
NON BINARY	0 (0.00%)
PREFER NOT TO ANSWER	2 (0.24%)

DROPPED MEMBERS

[CLICK HERE FOR CUMULATIVE MEMBERSHIP DATA](#)

DECEASED	13
CLUB CANCELLED	7
OTHER	55
TOTAL	75

TOTAL FAMILY UNIT MEMBERS 138

FAMILY MEMBERS PAYING HALF DUES 71